

1 Cubic foot of ZORBENT

replaces 100 lbs. of clay absorbent



Directions For Use

STEP 1:

Hold ZORBENT container close to the spill and pour the ZORBENT around the spill. If the spill is flowing, pour the ZORBENT in front of the spill creating a dam. The viscosity of the spilled liquid determines the required amount of ZORBENT. Less ZORBENT is needed for a thick spilled liquid, such as motor oil, and more ZORBENT is needed for a thin spilled liquid, such as alcohol.

STEP 2:

Mix the ZORBENT (with a medium to stiff bristle broom) into the spill in a circular motion breaking up all the clumps, until the liquid is completely absorbed. If the spill is not completely absorbed, add more ZORBENT directly onto the residue. Repeat until the liquid is completely absorbed and the surface is clean and dry.

STEP 3:

After the spill is absorbed, sweep up the ZORBENT with a broom and dustpan. ZORBENT may then be disposed of according to Federal, State and Local regulations for the liquid absorbed.

STEP 4:

If the spill is high viscosity (thick), or of a large volume, a garden rake can be used to work ZORBENT through the spill. This will allow the ZORBENT to penetrate the surface of the spill. Once the ZORBENT has been worked into the spill, it will encapsulate the liquid on contact.

CAUTION:

Keep product out of eyes. Do not swallow. In case of eye contact, remove contact lenses, flush eyes thoroughly with water for at least 15 minutes. Do not rub eyes. Consult a physician if irritation persists. Wear protective equipment appropriate for the spilled material. Particular care should be taken when cleaning up hazardous and/or toxic liquids.

DISPOSAL INFORMATION:

Used ZORBENT should be disposed of in accordance with Local, State and/or Federal regulations.

Specifically For REMOVING OIL & GREASE STAINS FROM Cement Floors:

STEP 1:

Dissolve the stain by wetting with Zep Cleaner & Degreaser. Scrub vigorously with a stiff hand broom or brush.

STEP 2:

Allow degreaser to remain on the stain for 10 minutes.

STEP 3:

Hold the canister close to the stain and liberally shake Zorbent onto the spot. Use a stiff hand broom or brush to stir the mixture vigorously, breaking up all clumps. Add more Zorbent until mixture appears dry and the cement floor is clean and dry.

STEP 4:

Sweep mixture into a dustpan and dispose of according to regulations for solid waste.

Product Code:

PROD #6995

1 Bag (1 cu. ft.)

For more information on ZEP Zorbent, contact your ZEP Representative or visit www.zep.com
Call 1-877-1 BUY ZEP (1-877-428-9937)

Zep Sales and Service,
A Division of Zep Inc.
ATLANTA, GEORGIA 30301
ZDL 210-01b • 10/07



ZEP® ZORBENT



Advanced Spill Absorber

Absorbs 16x More Than Clay, 10x More Than Diatomaceous Earth and 4x More Than Cellulose

LIGHTER. CLEANER. GREENER.

Patented new technology that's **sweeping** the country!



New ZEP Zorbent is everything you've ever wanted in a spill absorbing material.

Incredibly lightweight

Forget those cumbersome bags filled with heavy clay. ZEP Zorbent is an amorphous form of granular silica, so it's **75 – 80% lighter** than other top-selling absorbents. That makes it:

- Easy to pour
- Easy to transport and store
- Easy to dispose of

100% dust-free for a clean sweep

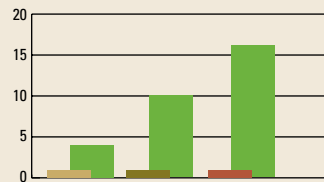
You can also do away with the dust mask when you use ZEP Zorbent. Its provides **dust-free performance** for:

- Easier total clean-up
- No messy dust to breathe

Up to 16 times more absorbent

When it comes to absorbency on a wide variety of spills, **ZEP Zorbent** leaves the competition in the dust.

- Absorbs **16x** more than clay
- Absorbs **10x** more than diatomaceous earth
- Absorbs **4x** more than cellulose



Greener performance

ZEP Zorbent passes the **EPA approved** TCLP leach test that simulates 20 years in a landfill using Volatile Organic Compounds (VOCs) as test liquids.

- Retains more than 99% of VOCs
- Encapsulates liquids and holds them in, even after disposal
- EPA tested and approved

A healthier choice

Use ZEP Zorbent with **confidence**, knowing that it:

- Poses no health, flammability or reactivity hazards
- Does not require the use of dust masks or respirators



BEFORE

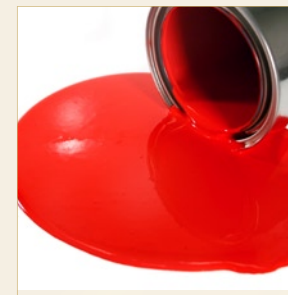
A messy, potentially hazardous spill



AFTER

Absorbed & encapsulated

Quickly absorbs virtually any spill



PAINT

Latex, Oil Based, Stains, Acrylics



OILS

Motor Oil, Diesel, Hydraulic, Mineral, Vegetable, Brake Fluid



SOLVENTS

Acetone, MEK, Methylene Chloride, Toluene, Xylene, Anti-Freeze



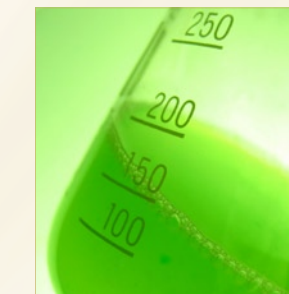
ALCOHOLS

Methyl, Ethyl, Isopropyl, Butyl



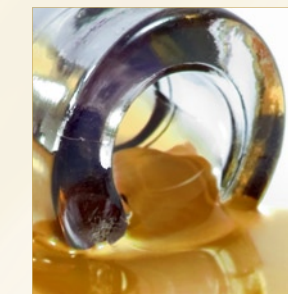
CAUSTICS

Sodium Hydroxide, Potassium Hydroxide



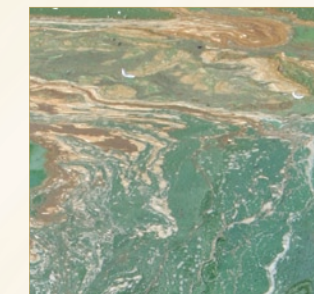
ACIDS*

Sulfuric, Hydrochloric, Perchloric, Phosphoric



FOODS

Ketchup, Salsa, Soda, Milk



WATER

Waste, Contaminated

*Do not use on hydrofluoric acid